

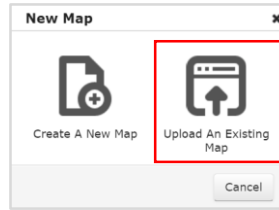


## "How To" – Upload a Map

Click

1.

Click Upload an Existing Map



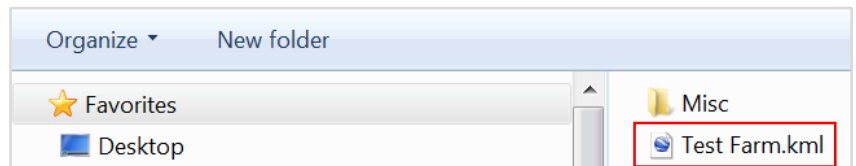
2.

Click

TMOL supported map files  
ESRI Shapefile, KML, KMZ, GPX, or CSV file

3.

Select the map file & click "Open"

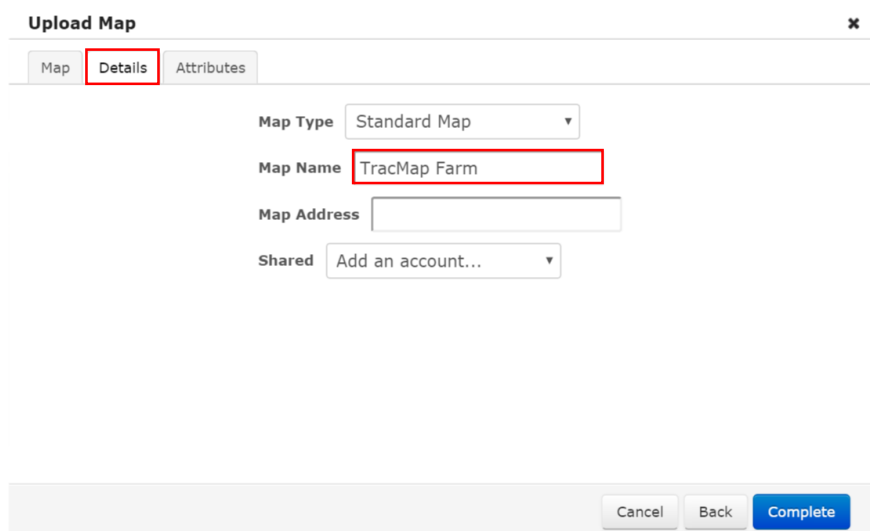


4.

Click

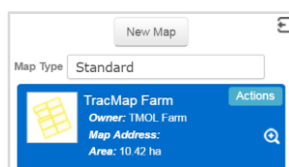
5.

Click Details,  
name the map,  
click Complete &  
Confirm



6.

Uploaded map



7.